

The Japanese name of the bridge was selected from
5,890 suggestions submitted by the general public.

Home to the No. 1 suspension bridge
in Japan

九重
KOKONOE

Elevation 777 meters

Walkway in the Sky

Kokonoe "Dream" Suspension Bridge

Kokonoe "YUME" Otsurihashi

Welcome to
Kokonoe!



Miya-chan, the Miyamakirishima azalea fairy
character design Nishida Atsuko

Elevation 777 meters

Walkway in the Sky

Kokonoe "Dream" Suspension Bridge



This giant suspension bridge has an elevation of 777 meters, and measures 390 meters in length and 173 meters in height. It is the longest pedestrian suspension bridge in Japan. From the bridge you can see the dynamic Osu and Mesu Shindo Falls, selected as one of the Hundred Finest Falls in Japan.

Kuju range

Kokonoe "Dream" Suspension Bridge

(Outline specifications)

- Structure: Pedestrian suspension bridge (single-span suspension bridge)
- Construction start: May 2004
- Completion and public opening: Oct. 2006
- Total cost (including surrounding area): About 2 billion yen (no financial assistance from prefectural or national governments)
- Elevation: 777 m
- Length: 390 m
- Height: 173 m (highest in Japan)
- Height of main tower: 43 m Dia. of main tower: 1.4 m
- Span width: 1.5 m (room for two wheelchairs to pass each other)
- Guardrail height: 1.4 m
- Total weight: 564 t Span weight: 312 t
- Design capacity: 119 t (1800 people of 65 kg each)
- Will withstand wind velocities of up to 65 m/s
- Will withstand earthquakes to seismic coefficient 7.

One of the Hundred Finest Falls in Japan
Shindo Falls Osu Falls

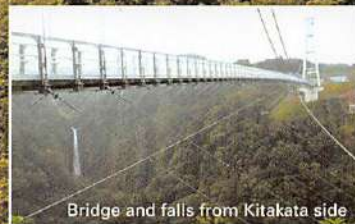
83 m drop

Nakamura side

Mesu Falls

93 m drop

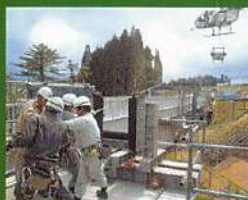
Kitakata side



Bridge and falls from Kitakata side

Visitor statistics

○ Oct. 30, 2006: Open ○ April 10, 2007: 1 million ○ Sept. 16, 2007: 2 million (322nd day) ○ April 4, 2008: 3 million (522nd day) ○ Nov. 17, 2008: 4 million (750th day) ○ Oct. 15, 2009: 5 million (1,082nd day) ○ Nov. 8, 2010: 6 million (1,471st day) ○ April 13, 2012: 7 million (1,993rd day) ○ July 1, 2013: 7,770,000 (2,437th day) ○ Oct. 21, 2013: 8 million (2,549th day) ○ June 5, 2015: 9 million (3,141st day) ○ March 1, 2017: 10 million (3,776th day)

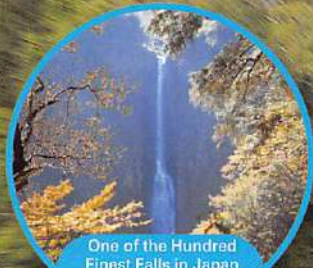


Bridge construction ○ Contractor: Kawata Kogyo Co., Ltd. ○ Design: Kyodo Engineering Co., Ltd.

What's No. 1?

- ★ Longest suspension bridge: Hakone-Mishima Suspension Bridge in Mishima, Shizuoka (400 m) Opened Dec. 2015
- ★ Highest suspension bridge: Kokonoe "Dream" Bridge in Kokonoe, Oita (173 m)





One of the Hundred
Finest Falls in Japan
Shindo Falls
(Osu Falls)



Safety management

The staff works to ensure your safety, using the latest system.



The highest 173 meters in Japan



Looking up at the bridge

High!

It's
390m
long!

And the view
is great!



The bridge in winter



Admission

◎Jan.–June and Nov.–Dec....8:30–17:00 ◎July–Oct....8:30–18:00

* It begins to get dark about 16:00 from fall through spring, making it hard to enjoy the scenery. * Tickets sold until 30 minutes before closing.

Time needed to walk: 13 min. round trip

Parking (free)

Nakamura side Car..... 229 cars
Car (wheelchair access)** 6 cars
Bus 37 cars

Kitakata side Car..... 46 cars
Car (wheelchair access)** 2 cars
* No bus parking

Available services

- ◎Wheelchairs available on both sides
- ◎Pet cages available for visitors with pets

Precautions

- ◎No crossing with open umbrella
- ◎No pets allowed on bridge
- ◎Bridge may be closed for excessive rain, wind, ice, etc.

Admission (per person)

	General	Group of 30 or more
Middle school and older	500 yen	450 yen
Elem. School	200 yen	180 yen
Pre-school	Free	



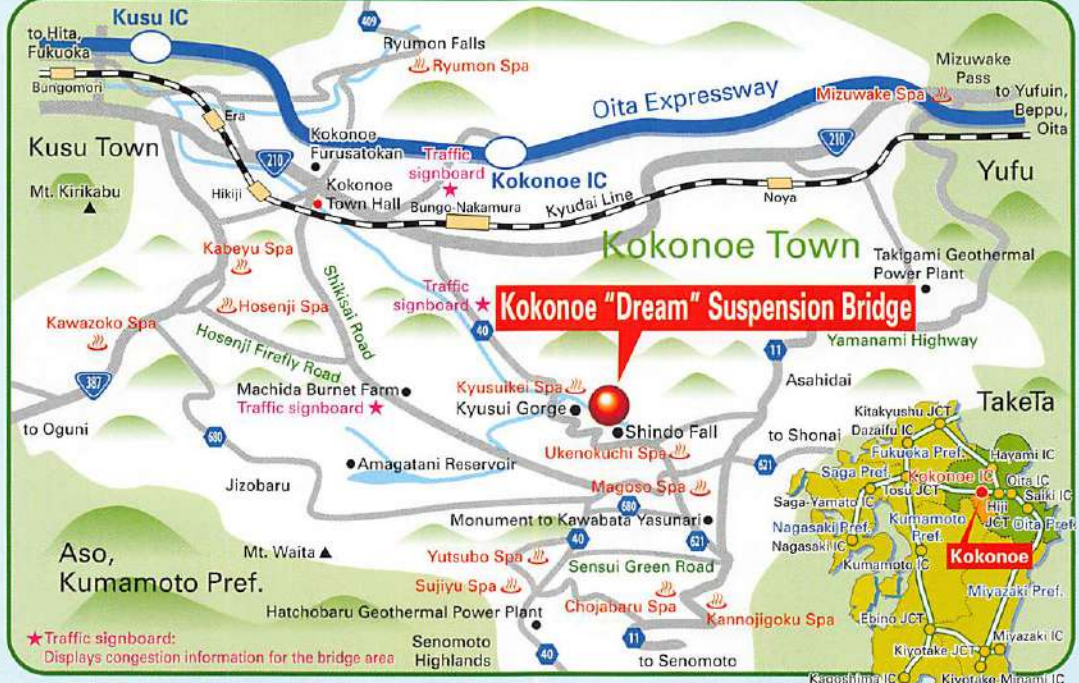
Local produce sale

Tenkukan

Offers a wide selection of vegetables, fruit and other products from the local region.

Be sure to try the famous Kokonoe "Dream" Burger!





Access

From Kokonoe IC

- ⊙ via Kyusui Gorge (Route 40): About 25 min.
- ⊙ via Shikisai Road: About 30 min.

From Yufuin

- ⊙ via Yamanami Highway: About 40 min.

From Fukuoka and Kitakyushu

- ⊙ via Expressway: About 2 hours

From Oita and Beppu

- ⊙ via Expressway: About 1 hour

From Oita Airport

- ⊙ via Expressway: About 1 hour 40 min.



Get both stamps to prove you walked across!

Stamp here!

Good job!

Stamp here!



Kokonoe "Dream" Suspension Bridge Office
Tel:0973-73-3800
 1208 Tano, Kokonoe, Kusu-gun, Oita 879-4911
 Fax:0973-73-3877



Kokonoe Town Tourism Association
Tel:0973-73-5505

<http://www.yumeooturihashi.com/>