



Kokonoe "Dream" Information Magazine

DREAM KOKONOE

Digest edition

Feel the Pulse of the Earth



Autumn foliage, Kuju Mountains

Four seasons in Kokonoe-machi and information

Kokonoe
Town,
Oita
Prefecture

Profile of Kokonoe Town

Situated in the western part of Oita prefecture, Kokonoe neighbors Yufu and Taketa cities to the east, Kusu Town to the northwest, and Aso-gun, Kumamoto prefecture to the southwest. Covering 271.37 square km in area, it stretches 18.7 km east-west and 23.4 km north-south. The Kusu River, one source of the Chikugo River, flows through the central region in the east-west direction, with fields and forests in the western portion of the town. The Kuju Mountains—The “Roof of Kyushu”—including Mt. Taisen and Mt. Mimata flank the town to the south. The town also includes about half of the Aso Kuju and Hida Yaba Hikosan National Parks.

Cultivated fields are terraced throughout the town, at elevations from 350 to 1000 meters, but much of the land is still mountain, forest, or natural highland. The temperature differential is large, as part of the climatic region stretching from Tohoku to Kyushu. Kokonoe also includes the Handa highlands, one of the most beautiful in Japan, many hot springs which have earned it the nickname of the Kokonoe “Dream” Hot Spring region, rich natural scenery with waterfalls and gorges, and stunning volcanic vistas. It offers the natural beauty of the four seasons and a diverse selection of tourism sites.



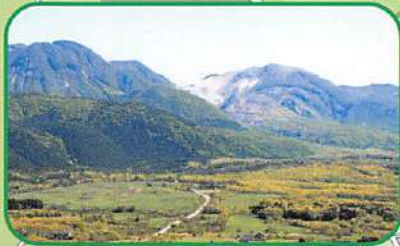
Kokonoe “Dream” Burger or Pork Bowl shop



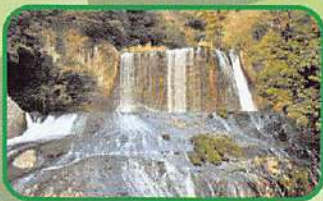
Miyama Kirishima azaleas



Miyama Kirishima azaleas



Handa Highlands



Ryumon Spa



Kusu

The four seasons
in Kokonoe

Spring



The brilliant greens of the mountains dyed in pink

Miyama Kirishima azaleas
bloom from mid-May



Kyushu Olle Kokonoe – Yamanami course



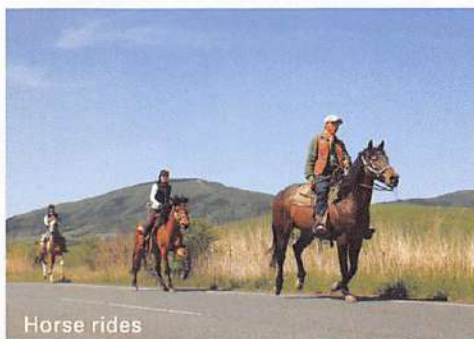
Kuju Handa Kogen Cross-Country Race



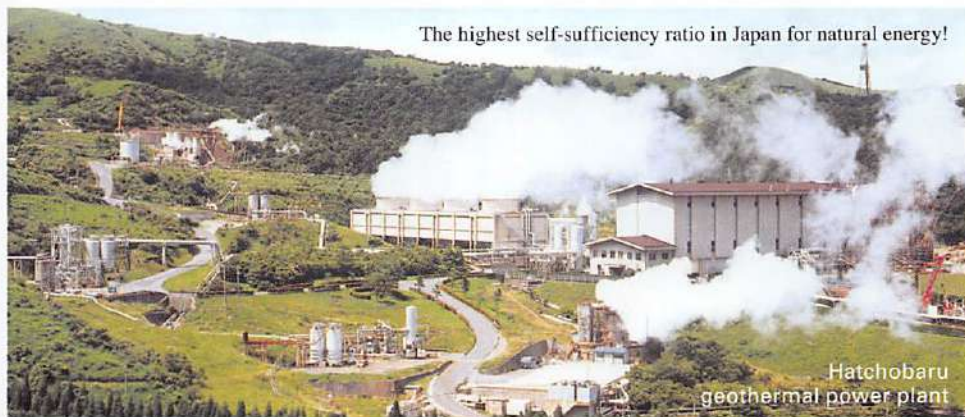
Ukenokuchi Spa



Spring burn-off



Horse rides



The highest self-sufficiency ratio in Japan for natural energy!

Hatchobaru
geothermal power plant

The four seasons
in Kokonoe

Summer



Summer comfort with the falls: A natural cooler

Visitors sliding down the rocks at Ryumon Falls



Yamanami Highway



Hydrangea at Takara Hachimangu Shrine



Fireflies



Kokonoe Green Park Sensui Campground



Blueberry picking



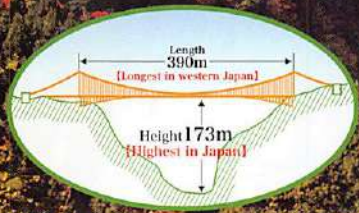
Tadehara Wetlands



Kannojigoku Spa

The four seasons
in Kokonoe

Autumn



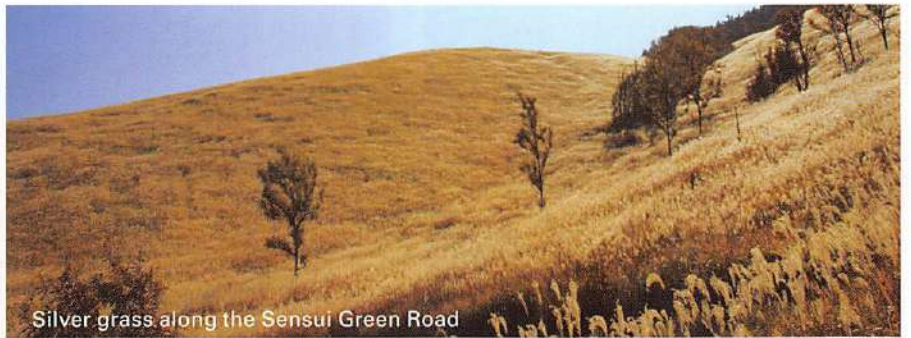
◎Total weight: 564t Girder weight: 512t
 ◎Design strength: 1190t (designed to withstand approx. 1800 people at 65 kg each)
 ◎Safe to wind velocity of approx. 65 m/s, and seismic vibration of shindo 7

Autumn scenery as gentle and warm as the good old days

Kokonoe
"Dream" Bridge



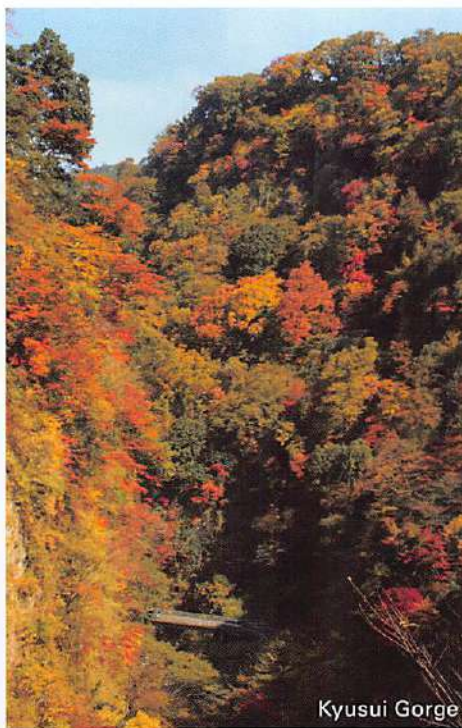
Amagatani Reservoir



Silver grass along the Sensui Green Road



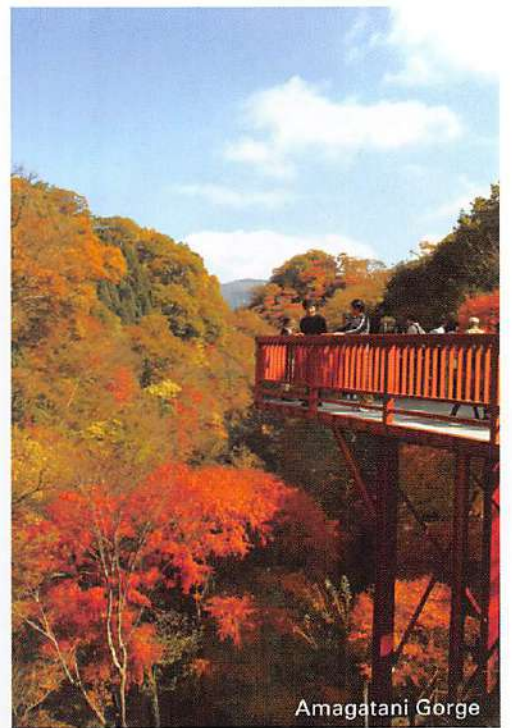
JR Bungo Nakamura Station



Kyusui Gorge



Kyusuikei Spa



Amagatani Gorge

The four seasons
in Kokonoe

Winter



Kuju Ski Resort

The Kuju Mountains in silver: Your winter stage

Enjoy skiing, snowboarding, and playing in the snow at the finest ski resort in Kuju



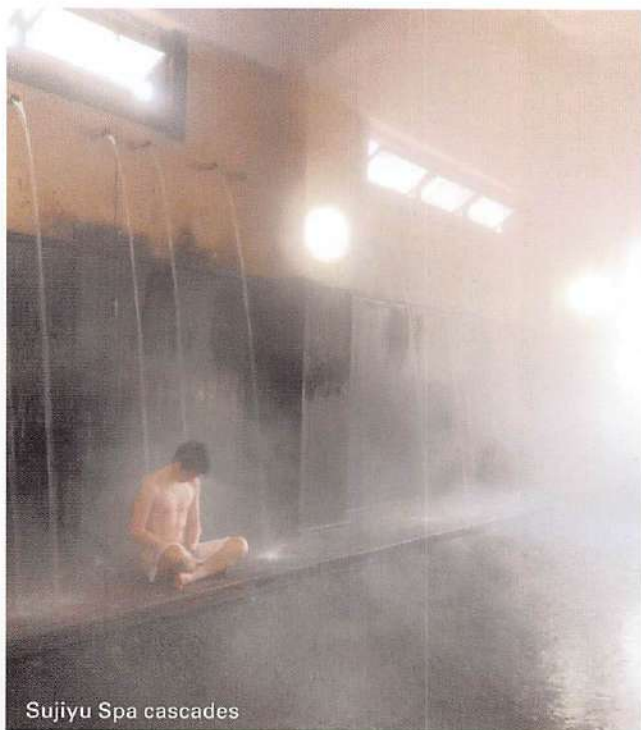
Otsuribashi Ice Festa



Komatsu "Hell" spring



Chojabaru Spa



Sujiyu Spa cascades



Yamanami Highway



Kuju Mountains

Souvenirs from Kokonoe bring back fond memories. Here are a few of the most popular items.

Souvenirs
Special
products



Local foods such as miso, soy sauce, and rice

Bungo beef and
Kogen vegetables



Kokonoe "Dream" Pork



Kokonoe "Dream" Pork Bowl

Karinto
deep-fried sweets



Blueberry jam



Kokonoe Hitomebore rice



Kokonoe "Dream" Burger

Kokonoe "Dream" Bridge Tenkukan

Offers a wide selection of
souvenirs and foods from the
local region.



Jizake local sake

Kokonoe Furusatoka

A collection of the best foods and crafts items from the local region, for display and sale.
You can also enjoy dangojiru soup and other hometown treats at the restaurant here.



There's always a traditional event or festival in beautiful Kokonoe!

Event calendar



Spring hikers in the Kuju Mountains

Jan.	Late	Otsuribashi Ice Festa	Kokonoe "Dream" Bridge
Feb.	Late	All-Japan Snowball Fight	Kuju Ski Resort
April	2nd Sun.	Nashika Festival	Yatsushika Brewery
May	Early	Ukenokuchi Spa Festival	Ukenokuchi Spa area
	Mid	Sujiyu Spa Fireworks Show	Sujiyu Spa
June	1st Sun.	Kuju hiking open	Mt. Kusu, Mt. Taisen
	Every Sat.	Hosenji Spa Firefly Festival	Hosenji Spa
July	1st Sat.	Hydrangea Festival	Takara Hachimangu Shrine
	Mid	Ryumon Falls open	Ryumon Falls
	Mid	Nogami Gion Festival	Nogami Shopping Arcade
	Mid	Shimodan Gion Festival	Shimodan region

Aug.	1st Sat.	Kuju Handa Highlands night hike	Handa Highlands
	Early	Yamasato in Autumn Burnet	Machida Burnet Farm
Sept.	9日	Free admission to Kokonoe "Dream" spas	Kokonoe Town
	Early	Sujiyu Spa Moon-Viewing Festival	Sujiyu Spa
	Mid	Hosenji Spa Moon-Viewing Festival	Hosenji Spa
	Every Sat.	Yunohira Spa Moon-Viewing Festival	Yunohira Spa
	Mid	Kokonoe Furusato Festival	Kokonoe Ikiiki Land
Oct.	Late	Otsuribashi Autumn Color Festival	Kokonoe "Dream" Bridge
	Early	Autumn Art Festival	Kyushu Geijutsu no Mori
Nov.	Late	Sujiyu Amazake Festival	Sujiyu Spa
Dec.	Early	Ski slopes open	Kuju Ski Resort

Come and join the fun!



Otsuribashi Ice Festa



Nashika Festival



Nogami Gion Festival



Shimodan Gion Festival

Access

- To Fukuoka Airport
From Guam, Phillipines, Vietnam: 4-5 hours
From Thailand, Singapore: 6 hours
- From Fukuoka Airport by JR railway to Bungo Nakamura Hakata (Kyudai Line Ltd. Express): 2 hours
- By highway bus to Bungo Nakamura
From Hakata Station: 2 hours
Note: About 45 min. from Bungo Nakamura to Chojabaru
- By expressway to Kokonoe IC
From Dazaifu IC: 1 hour 20 min.



Bus information

Highway bus (Fukuoka-Kokonoe).....	092-734-2727
Sanko Bus Service Center.....	096-325-0100
Kamenoi Bus.....	0977-23-5179

Taxi information

Miyama Taxi.....	0973-76-2121
Kokonoe Hato Taxi.....	0973-79-2510



Town flower:
Miyama Kirishima azalea



Town tree:
Sawtooth oak



Town bird:
Cuckoo



Miya-chan #3055
The official town mascot, Miya-chan is a sprite of the official town flower, the Miyama Kirishima azalea. She was designed by Atsuko Nishida, a world-famous game and anime character artist.

Kokonoe "Dream" Information Magazine



Kokonoe
Tourism
Information

◆ Kokonoe Town Tourism Association (inside JR Bungo Nakamura Station)

714-28 Oaza Migita, Kokonoe, Kusu-gun, Oita 879-4801
Tel: 0973-73-5505 Fax: 0973-77-7676
<http://www.kokonoe-k.com/>

◆ Commerce, Industry, Tourism, and Natural Environment Section, Kokonoe Town, Oita Pref.

8-1 Oaza Ushiro-Nogami, Kokonoe, Kusu-gun, Oita 879-4801
Tel: 0973-76-3150 Fax: 0973-76-2247
<http://www.town.kokonoe.oita.jp/>

Kokonoe "Dream" Bridge Office

1208 Oaza Tano, Kokonoe, Kusu-gun,
Oita 879-4911
Tel: 0973-73-3800 Fax: 0973-73-3877

Kuju Handa Highlands

260-2 Oaza Tano, Kokonoe, Kusu-gun,
Oita 879-4911
Tel/Fax: 0973-79-2381



Kokonoe Town,
Oita Prefecture



おんせん県おおいた
Onsen Capital Oita

When dialing from overseas,
replace area code **0973** with **81-973**.



阿蘇くじゅう国立公園
飯田高原
(大分県九重町)

ASO KUJU NATIONAL PARK
HANDA HIGH LANDS